



# Research Inspiration

An International Multidisciplinary e-Journal

(Peer Reviewed, Open Access & Indexed)

[www.researchinspiration.com](http://www.researchinspiration.com)

Email: [researchinspiration.com@gmail.com](mailto:researchinspiration.com@gmail.com), [publish1257@gmail.com](mailto:publish1257@gmail.com)

ISSN: 2455-443X

Vol. 1, Issue-IV

Sep. 2016

Impact Factor : 4.012 (IIJIF)

Ñf'k Jfedk ds LokLF; ij dhWuk'kd dk Lkko%vvoj ft ys dk {s-h, v/; ; u

MWdUg\$ k yky ehuk  
Q k|; krk ½vksy ½  
jkt dhr egkfo | ky; | jkt x<+¼vvoj ½jkt LFku

## I kjkák (Abstract)

*vkt knh ds ckn n'sk dks vRefuHj cukus ds fy, dh'k eagfjr dhUr ds vkxeu ds djk.k jkl k; fud [kkn] mlUr cht k dh'k ; a-ls ds l kfk&l kfk dhWuk'kd nokv'kd vkxeu Hh gyk gA ft ys eabudk iz s Hh fnu&i frfnu cnrk t k jgk gA dhWu l s Ql yla ds cplus ds fy, Ñf'k Jfed , .Ml YQW dhWuk'kd dk vf/kdrj iz s djrs gA ft l l sbuds bLreky ds nks'ku vks' ckn ea Ropk rFlk vk'la ea t yu l s yslj v'la ds fu"dz ghus rd dh ijs'ku; k l leus vkbZ gA ; s dhWuk'kd viuk vlj yEcs l e; rd NMsrgarFlk i kuh eacgdj Hh u"V ughagks gA {s- ea fi Nys i k p o"lZ ea dhWuk'kd t gj l s eR; q ds ekeys efgykv'la dh vi\$kk iq "la ea vf'kd ik x, gSD; k'cd Ql yla ea dhWuk'kd'la dk fNMelko vf/kdrj iq "la }kjk fd; k t krk gA geljs Ñf'k Jfed dhWuk'kd'la ds mpr mi; s , oa fouk'kd kjh i Hko ds i fr vf/kdrj vufHK gS vks' budk euekuk mi; s dj jgs gA ft l l s gj o"lZ l s Mks Ñf'k Jfed'la dh ek' b'gh Ql yla e fNMelko ds nks'ku gh gk t krh gA*

## I kku; ifjp; (Introduction)

vkt kn Hjr dh [k]gky rLohj ml ds x'la ea fn[krh FkA x'la dh v'ek [k]la es cl rh Fh vks' [k]h l s gh ijs n'sk dks [k] mi yC'krk l fu' pr g'rh FkA ; g ckr rhu&pkj n'kd i'kuh gA vkt rLohj Bhd bl ds myV gA I kku; H'k'k ea dgs rks vkt u rks xk; jgh vks' u gh x'p dh [k]la vkt knh ds ckn n'sk dks vRefuHj cukus ds fy, gfjr dhUr ds nks' ea ljdkj dk l'kjk t'kj mit c'kus ij Fk' fodkl dh l'kjh ; k'uk; [k]kuk mi yC'krk l fu' pr djus rd gh l'fer jgh ml l e; jkl k; fud [k]la , oa dhWuk'kd'la ds iz s dks c'kok fn; k x; k'la y'la ds l'jdkjh rks' ij ; s pht a mi yC'k djkbZ t kus y'la urht u mit



c<H fuf pr rls ij yk... es [k]gk yh vk; h ij bu l cdk gea cgr cMk eW; Hh pqluk iMkA

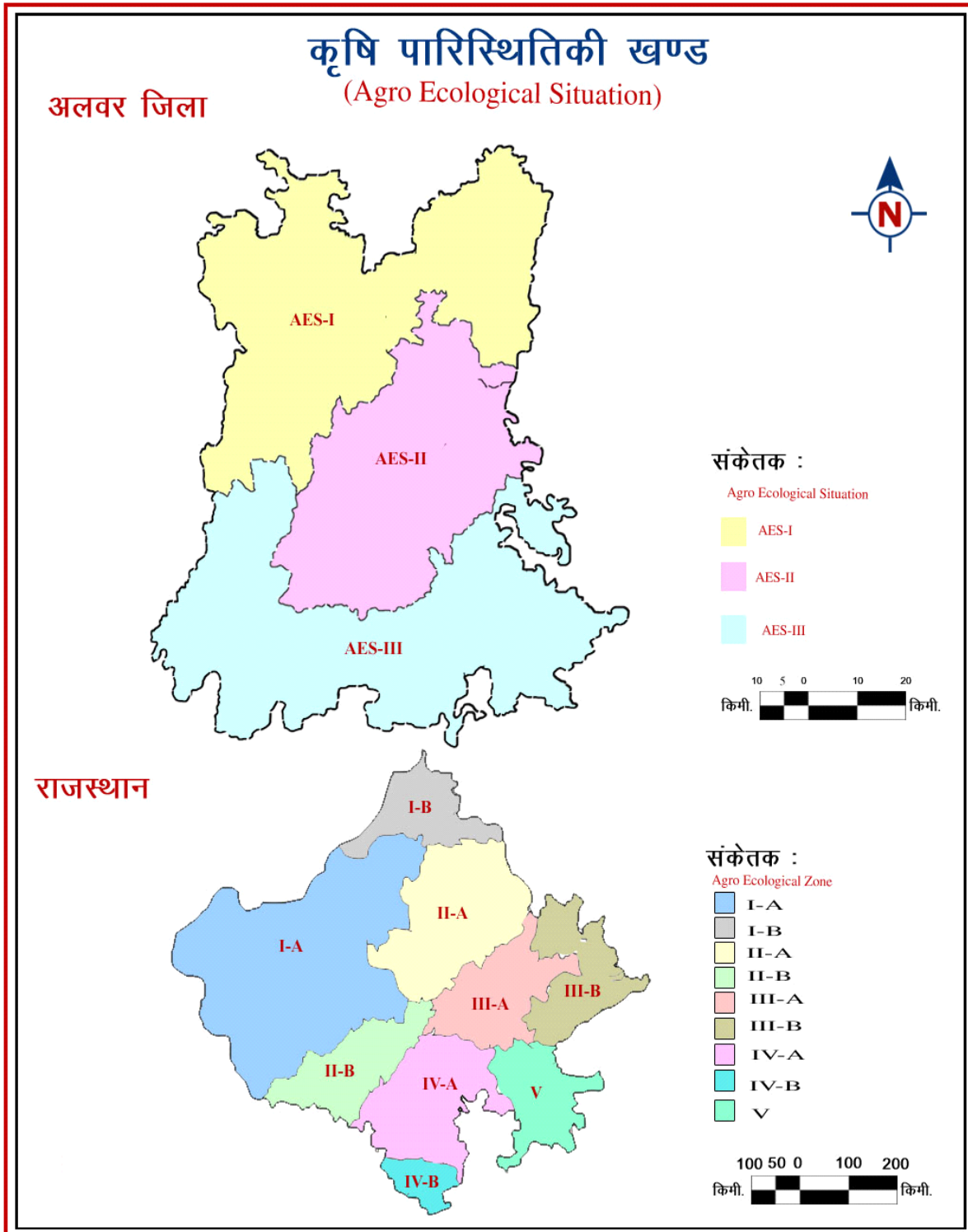
df'k ea gfjr dHUr ds vkxeu ds dkj.k jkl k; fud [kn] mUr cht k; df'k ; a-ka ds l Fk&l Fk dHvuk'kd nokvka dk vkxeu Hh gqk gA ft ys ea budk iz; sx Hh fnu&i frfnu cnrk tk jgk gA buds iz; sx l s Ql y mRi knu ea dHvka l s gkus okyh Ql y dh {kr l s cpk t k l drk gA yfdu df'k ea dHvuk'kd ka ds iz; sx l s vud l eL; kvka dk i mHkZ gk x; k g\$ ft l l sekuo LokLF; , oad'f'k ea l gk; d l ve t hka dk fouk k i zqk gA

vkt rdudh mUr us fdl kuka dks mudh l kyuk vk; l s plj xqk T; knk dt Zkj dj fn; k g\$ vls [kka dk mitkAiu Hh Nhu fy; k gA fdl ku vkt i k i Eij d] de moZd] de dHvuk'kd vls de i kuh okyh Ql yka dks NMDj udnh Ql yka ds edMk ky ea Ql x; k g\$ bl dk ifj. ke ; g gqk fd t gk 1991 ea fdl ku ij vls r dt Z<kZgt kj Fk og vkt c<dj 35 gt kj : i; sds i k t k pqlk gA nsk ds vud fgLl ka esfd, x, v/; ; u l s Kkr gqk g\$fd gekjs fdl ku dHvuk'kd ka ds mfpr mi; sx , oa fouk'kd kj h i Hko ds i fr vf/krj vufHK g\$ vls budk euekuk mi; sx dj jgs gA nsk ea gj o"Zl s l Ms fdl kuka dh ek' bLgh Ql yka es fNMeko ds nls ku gh gk t krh gA

### v/; ; u {k= (Study Area)

vyoj ft ys dk l Ei wZ {k= orZku ea 1/2 u~1985 l 1/2 jk'Vfr jkt /kuh {k= (NCR) ds vUr xZ Hh 'Wfey gA fnYyh dk r t h l s foLrkj gkus ds dkj.k jk'Vfr jkt /kuh ds pljka vls fodkl ds fy, vyoj dks Hh bl ; kt uk ea l fefyr fd; k x; ka vyoj ft yk mYk & i wZ jkt LFku ea viuh , d vyx Hsrd , oa l ka dfrd igpu j [kus okyk ft yk gA vyoj] jkt LFku dk fl g} kj Hh dgykrk g\$ t k fd jkt LFku ds i wZ kj Hkx ea 27°03' l s 28°14' mUjh v {ka k , oa 76°07' l s 77°13' i wZ nsk krj dse/; fLFkr gA

bl dh mYk & i wZ l hek l s gfj; k k jkt; ds j o k Mh x M k p ft ys , oa Hj ri g ft ys dh l hek a o mYk j h l hek l s eg t n x < + ft yk 1/2 gfj; k k 1/2 , oa t ; i g ft ys dh l hek r Fk nf {k k ea nsk k ft ys dh l hek yxh g p Z gA bl dk dy Hs k kyd {k= Qy 8380 oxZ fdyk el Vj g\$ t k jkt LFku ds dy {k= Qy dk 2-45 i fr 'kr gA vyoj ft ys dh Hk v k d frd l j p u k v j k o y h i g k M; k mitkA t yk e s ku vls de A p k Z ds jr ds V h y k a l s f u f e Z g A



स्रोत : भारतीय योजना आयोग, नई दिल्ली



H&vldfr nFVdsk lsvyoj ft yk ; euk&l ryt esiku dks foHft r djus okys vjkojh ioZ  
 Ük kykva ds e/; Qyk gyk gA bl sVh ; euk esiku Hh dgk t krk g\$ t ks mlyj l snfk k dh  
 vly Qyk gyk gA ft ys dh tyok ql lekU ; i lsv) Z'kd gA xelZ ds ek\$ e ea rt xelZ  
 iMrh gA l fnZ k Hh cgr dMds okyh gkrh gA nks eq; Ql yk ds vfrfjDr ft ys ds fl pbZ  
 l fo/k okys {s= ea ekpZl st u ds clp t k n Ql y r\$ kj dh t krh gA

**vldMds L«kr , oafof/k ra- (Source of Data and Methodology) :**

iZrq 'ksk dks vf/kdk/kd oKkud fof/k k adk iz sx dj v/; ; u dks rF; Red #i nus  
 dk iz kl fd; k x; k gA bl v/; ; u ds fy, iFfed , oaf}rh d nuka izdkj ds vldMds  
 mi; sx fd; k x; k gA iFfed vldMds rgr df'k jl k ula l s l Ecf/kr l puk a, df=r dh  
 xbZg\$ ft l ea Ql yk ea moZ dka , oa dlvuk k dka dk mi; sx] d"kdka dk nFVdsk l t kx: drk  
 rFk ekuo LokF; ij iMas okys iHho vfn dk Q fDrxr l kRdkj rFk l kfgd ifjppZ  
 djds izukoyh HjoKdj vlsk k dk Zfd; k x; k gA f}rh d vldMds vUrZr ljdkjh  
 v) Zjdkjh iQrdky; k t ux.kuk foHkx] LFkykdfrd ekufp=] xt sV; j] vU; ljdkjh fjdMkZ  
 'ksk if=dkvkrFk l EcfUkr mi; sxh ocl kbZ dk iz sx fd; k x; k gA

v/; ; u {s= ds vf/kd foLrR gkus ds dkj.k cgrjrh iZrp; u rduhd dk iz sx fd; k  
 x; k g\$ ft l l s =fVjgr ifj. ke iZr gk l da iZrq v/; ; u ea oKnr ifj. ke iZr grq  
 fuFu fof/k ra- dks viuk, k x; k gA {s= dks rhu df'k {s= ea oxhZj.k djds iZ, cl p; fur  
 xlo l s jME fof/k }kj k 10&10 ?kj k dk p; u djds df'k jl k ula l s l Ecf/kr l puk a, df=r  
 dh xbZg\$ ft l ea ekuo LokF; ij iMas okys iHho vfn dk ; knfPNd fof/k }kj k df'k Jfedka  
 dk p; u djds Q fDrxr l kRdkj] izukoyh rFk l kfgd ifjppZ djds df'k foHkx ds  
 l g; sx l s vlsk k dk Zfd; k x; k gA

**ifj. ke rFk fo' ysk k (Results and Analysis) :**

dlvuk kd jl k u ; Qr ty ds fl pbZ djus l s Qfy; ka , oa gjh l fct ; ka ea budh ek=k  
 r; ekud l s dbZ xqkk T; knk c+ t krh g\$ t ks l h/ks ekuo 'kjh ea izsk dj t krh gA  
 Lru/kj; ka o if{k ka ea fyx gk k dks iHho dj iz uu foQyrk dk dkj.k curh gA bu



# Research Inspiration

ISSN: 2455-443X

An International Multidisciplinary e-Journal

(Peer Reviewed, Open Access & Indexed)

[www.researchinspiration.com](http://www.researchinspiration.com)

Email: [researchinspiration.com@gmail.com](mailto:researchinspiration.com@gmail.com), [publish1257@gmail.com](mailto:publish1257@gmail.com)

Vol. 1, Issue-IV

Sep. 2016

Impact Factor : 4.012 (IJIF)

dhVuk'kda dk vi?Wu vki kuh ls ugha gkrk QyLo: i ;s [kk| Ükkyk eai zsk dj mUjkrj  
i kkk Lrj la eak=red : i lsc<rstkrsga bl izdkj [kk| Ükkyk eai R, d i kkk Lrj ij  
bu jlk ula dh ek=k eal?ku of) dks tS vlo/kZi dgrsga tS vlo/kZi ds QyLo: i [kk|  
Ükkyk ds vire i kkk Lrj eabu jlk ula dh ek=k vR/ fkd c<+t krh ga

, d xte ds yk[k oafgLi ds cjkj dk Hh dhVuk'kd ekuo 'kjh dh l ve dk' kdkvla ij  
?krd i Hko Mkyus eal {ke gkrk ga i sh o"ZiwZifrcfUkr gkus ds chot w vHh Hh MhMh  
Vh] izuu vS daj dks c<k jgk ga djy eabl ds mi; la ls ?krd chkfj; kal leus vlbZ  
ga bl ds nfi Hko ls 400 lsvf/kd via gksx; sga bl ds blreky ds nSku vS ckn eaylsks  
us Ropk vS vqkha ea tyu] xHzkr ds eley; ca-iu] xHzLFk ds nSku Hwk dh eR, q  
fdMuh Qy] cPps esgn; jlx vS 'kjh eafodylark ds ekeys Hh vke gksx; sga

{s= eaf t l j'rkj l s d'k j l k ula dk mi; la c<rk t k jgk g\$ og , d cgq cMh fprk  
dk fo"k ga l fct; la rFk Qy fodrkvla } jk ysla ds vdf'kZ djus ds fy, , oarkt i u grw  
muds Aj dhVuk'kd Myrs g\$ ft l l s og gjk rFk pedhyk fn[rrk ga cXu] fhk Mh rFk  
xHh ea ?ky dks p w us dh {lerk vf/kd gkrh ga vr%; g ?ky Qy la rFk l fct; la } jk  
vo'ks'kr dj fy; k tkrk g\$ t k ckn ea euq; dh [kk| Ükkyk eai zsk dj tkrk ga

xgy tS rFk puk ds vukt la ds dhMa l s cplus ds fy, ml ds Aj eSkrFk W  
dhVuk'kd ikmMj dk blreky djrs g\$ t k xgy [kus oky la ds bl ikmMj dk nfi j. ke  
Hxruk i Mrk ga bl dk yxkrj mi; la djus l s LokF; ij dbZ izdkj ds nfi Hko ifjyf{kr  
gkus yxs ga

{s= l r n"V l s egt pa euQs ds fy, ft ys ds jk {s= eaf dl ku ifrcf/kr nokv la dk  
gjh l fct; la vS ek eh Qy la eami; la dj ysla dh ft anxh ds nlo ij yxkjgs ga rjcw]  
[kjcw] ddMh erhj k QW] ?kr k vlfj; k rFk [kjs dk vdkj vS ot u c<kus ds fy, fdl ku  
?krd nokv la ds bu ea ba D'ku ds ek; e l s ?ky jgs ga vU; jk'; la l s vk, dQ fdl ku  
c'vZij t elu ydj ysla dh ft anxh ea t gj ?ky us ds dkj k j eayxs gq ga



# Research Inspiration

ISSN: 2455-443X

An International Multidisciplinary e-Journal

(Peer Reviewed, Open Access & Indexed)

[www.researchinspiration.com](http://www.researchinspiration.com)

Email: [researchinspiration.com@gmail.com](mailto:researchinspiration.com@gmail.com), [publish1257@gmail.com](mailto:publish1257@gmail.com)

Vol. 1, Issue-IV

Sep. 2016

Impact Factor : 4.012 (IIJIF)

jk LFku ea l yQW }jk eR; D; fä; k dk foj.k

dzl -	ft yk	2005	2006	2007	2008	dy	jk; ea LFku
1-	t; ig	130	170	140	170	510	I
2-	vyoj	50	50	50	50	200	II
3-	vt ej	35	50	40	50	175	III
4-	> d; pw	20	30	20	30	100	IV
5-	Hj rig	20	20	30	20	90	V
6-	dk/k	30	40	20	01	91	VI
7-	Lkdj	20	10	30	30	90	VII
8-	Qjk	20	20	30	05	75	VIII
9-	nk k	10	10	20	10	50	IX
10-	>kyokM+	20	10	10	10	50	X

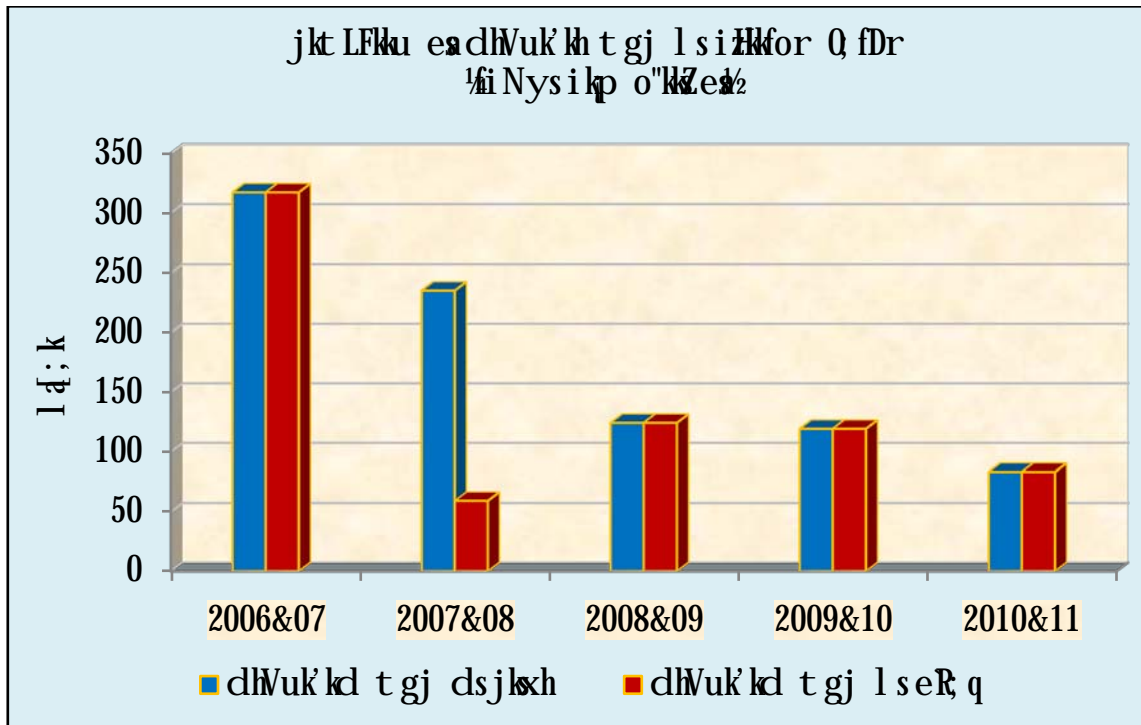
Lkr %QW d eM u foHx] , l-, e-, l- vLirky] t; ig jk -1/2

de ykr ea vfk de bZ ds fy, ; s dY k e dk bM, oa vM vM lu dk bt D' ku yxk jgs ga bl bt D' ku ds yxk l s Qy ; k l Ct h jkr k jkr rhu l snl xuk vdkj ea c<+ t krs ga

jk LFku ea dhVuk'kd t gj l seR; Q fDr; k dk foj.k hi Nysikp o"KZe

o"KZ	dhVuk'kd t gj ds eylek dh l a; k	dhVuk'kd t gj l sg pZeRdh l a; k
2006&07	317	317
2007&08	235	59
2008&09	124	124
2009&10	119	119
2010&11	83	83
dy	878	702

Lkr %QW d eM u foHx] , l-, e-, l- vLirky] t; ig jk -1/2



Qly eadhVyx tkusij eluo thou dsfy, ?krd ekukQkbl ba D'ku dk iz kx  
djrs gA l fct; k vls ek eh Qykd s: i eagj jkt ; g t gj 'lgj dh cMh eM; kard igp  
t krk gA

nwk dh elx 'lgjh {s-k ea vf/kd c<us rFk vki frZ de glus ds dlj.k vl aryu cuk  
jgrk gA ylx nqk mRi knu c<us dsfy, rjg&rjg ds mik vkt ekrs jgrs gA ft l l s nWk dh  
xql oUk ea yxkrkj fxjloV vkrh t kjgh gA dbZckj d"kd dhVuk'kd ; Or pljk di k ] rFk  
l fct; k ds vo' kka dks i 'lyk dks f[lyk nrs gA ft l l s dhVuk'kd vo' ksk nWk ea vk t krs gA  
vls nqk ds ek; e l smi HDrk vkrh dh [k| Udk yk ea igp t krs gA Rfydk l s Li"V gkrk gS  
fd vyoj ft yseal YQW 1/2 Y; tefu; e QWQkM 1/2 t gj [k us oky k dk vldMk yxkrkj c<rk  
t kjgk gA

o"lZ 2005 l s 2008 rd ds vldMh ij utj Mya rks l YQW l s glus okyh ekf-ka ea  
t; ig ftyk igys LFku ij vls vyoj nwjs LFku ij gA ; g [lyk k, l-, e, l- vLirky ds  
QWl d eM u foHk ds MWl -t uuh ds v/; ; u l s gyk gA



# Research Inspiration

ISSN: 2455-443X

An International Multidisciplinary e-Journal

(Peer Reviewed, Open Access & Indexed)

[www.researchinspiration.com](http://www.researchinspiration.com)

Email: [researchinspiration.com@gmail.com](mailto:researchinspiration.com@gmail.com), [publish1257@gmail.com](mailto:publish1257@gmail.com)

Vol. 1, Issue-IV

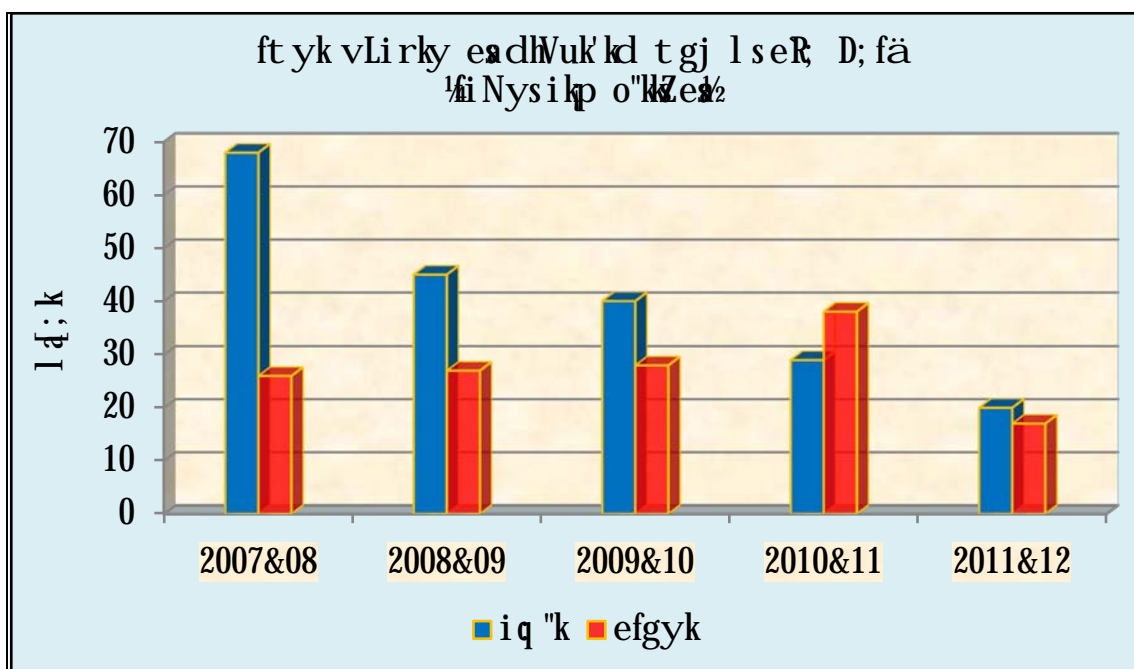
Sep. 2016

Impact Factor : 4.012 (IIJF)

ft yk vLirky eadlvukkd t gj l s i k Hkfor D; fä ½i Nys ik p o"lZ e½

o"lZ	vkmV Mj dđ		bUMj dđ		bUMj eR dđ	
	iq "k	Efgyk	iq "k	efgyk	iq "k	efgyk
2007	315	135	315	135	68	26
2008	306	210	300	210	45	27
2009	312	97	312	97	40	28
2010	265	175	184	115	29	38
2011	318	169	45	162	20	17
dy	1516	786	1156	719	202	136

L«kr %dk; ky; eq; fpdfRL; k , oaLokLF; vf/kdkjh vyoj ½kt -½



, l-, e-, l- vLirky eafl rEcj 2009 l s fl rEcj 2010 dh vof/k ea l YQKW [kus okys 89 ejlt vk s Fl ft ueal s 74 dh ekR gks xbA ft yseah o"lZ 2005 l s 2008 ds e/; l YQKW l s 200 Q fDr; ka dh t ku pyh xbZ ga vLirky ds QyM d foHkx ds vuq kj jkt LFku ea





# Research Inspiration

An International Multidisciplinary e-Journal

(Peer Reviewed, Open Access & Indexed)

[www.researchinspiration.com](http://www.researchinspiration.com)

Email: [researchinspiration.com@gmail.com](mailto:researchinspiration.com@gmail.com), [publish1257@gmail.com](mailto:publish1257@gmail.com)

ISSN: 2455-443X

Vol. 1, Issue-IV

Sep. 2016

Impact Factor : 4.012 (IIJF)

dhWuk kd t gj l s fi Nys 5 o "kZ ea 878 yk i Hk for gq] ft l eal s 702 Q fDr; k dh eR, qgk  
 xbZgA l o kZ/kd i Hk for yk k dk v k M k o "kZ 2006&07 ea 317 dk jgk gA j k T; ea dhWuk kd  
 t gj ds eky k dh l d; k v s dhWuk kd t gj l s g b Z e R d h l d; k y x H x l eku i k b Z x b Z  
 D; k d f p d R; k l o k v l s d "k d l e a b l d s i r t k x: drk dk H h v H k o i k, k t k r k g A

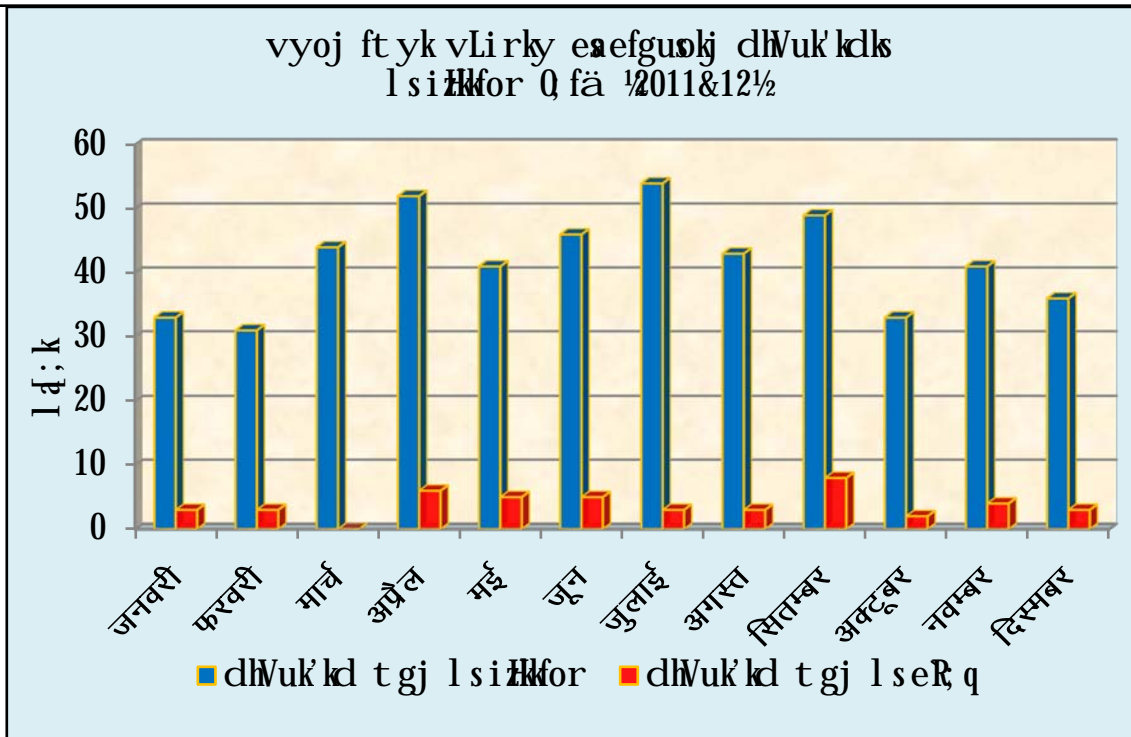
ft yk v L i r k y e a f i N y s i k p o "kZ e a 1516 i q "k r F k 786 e f g y k v k m V M j e a d h W u k k d  
 t g j d h t k p d s f y, v k, s f t u e a l s 202 i q "k r F k 136 e f g y k v k d h e R, q g k x b A o "kZ 2007  
 e a l o k Z / k d 68 i q "k d h e R, q g b Z t c f d o "kZ 2010 e a l o k Z / k d 38 e f g y k v k d h e R, q g b Z

v k M k d s n s k u s l s i r k p y r k g s f d f i N y s i k p o "kZ e a d h W u k k d t g j l s e R, q d s  
 e k y s e f g y k v k d h v i s k i q "k e a v f / k d i k, x, D; k d Q l y k e a d h W u k k d k d k f N M e k o  
 v f / k d r j i q "k e a j k f d; k t k r k g A

ft yk v L i r k y e a e f g u s k j d h W u k k d t g j l s i H k f o r D; f a 1/2 "kZ 2012 1/2

e l g	j k f x; k d h l d; k	d h W u k k d t g j l s e R, q		
		i q "k	e f g y k	; k x
t u o j h	33	02	01	03
Q j o j h	31	01	02	03
e k p Z	44	00	00	00
v i s y	52	04	02	06
e b Z	41	04	01	05
t w	46	05	00	05
t y k b Z	54	02	01	03
v x L r	43	03	00	03
f l r E c j	49	05	03	08
v D V w j	33	01	01	02
u o E c j	41	03	01	04
f n L E c j	36	02	01	03
d y	503	32	13	45

L k k r % d k, k y; e q; f p d R; k, o a L o k F; v f / k d k i j h v y o j 1/2 k t - 1/2



व्योज फतय वलरक्य एए २०११&१२ एए दधुक कक तगज दस ५०३ एकेयस न्तु दस; ख; ङ; फतु एए लस ४५ दधु एर, ककस खबए दधुक कक लस लोड/क इहोर जक; क दधु लद; क तुवु त कडरक एके दस एफगुस एए जगह गस त कद तुओलु कुओलु वदवु रकक फनल एके एफगुस एए दे इके खबए गए २०११&१२ एए दधुक कक तगज लस दस ४५ कु दधु; क दधु एर, कक गड गस फतु ल एए एफगुस क दधु वलरक्य इके "क दधु लद; क रहु खक व/क एके फतु ल दक एके; दक.क दक कु ल क रकक ल फतु; क एए दधुक कक दक फनमेले व/क रज इके "क } क क द; क त क क गए {स- एए दधुक कक लस लोड/क एर, क फल रकक एके एए गड गस फतु ल दक एके; दक.क गस दक ल ए; जक दधु कु ल क दधु कक एके ए जक गए फतु ल एए क दधुक कक दक मल; क कत मल कल एके मल कल रकक ल फतु; क एए दक गए त कद ल क ल स दे एर, क कड दस एफगुस एए न्तु गड गस फतु ल दक एके; दक.क {स- एए कु ल क दधु कक दधु कक एके ए गक गस ल ए; दधुक कक दक मल; क उगल कक गए

### ल एल; क, ओल क लो (Problems and Suggestions)

जक लक एए गज र दधु कक ल वलर १९७० दस मल कक गक वलर क दधु एए व्योज फतय वलरक्य फतु ल एए जक गए दक इके लक रकक एए गज र दधु कक दधु कक वलर दस दक.क कक क फुद [क दस ल कक कक दधुक कक नोक कक कक मल; क इके गक फतु ल एए वलरक्य कक {स- इके इके



dks uqll ku igpk k gA {s= ea df" k t yok qn' kvla ds vuq i Ql ya u ckdj udnh Ql ya  
 ckBZt krh g\$ t ks ml {s= fo' ksk dh t yok qds vuqly ughagkr agq Hh ckBZt krh gA vFKZ  
 enk dh fo' ksk kvk t y dh mi yC/krk ds vk/kj ij Ql ya ughayh t krh vfi rql ?kurk viuk  
 yh xbZ ft l l s df" k j l k ula dh i nfr ea of) gpZgA jkVt jkt /kuh {s= (NCR) ea t ul q ; k  
 ncko ds QyLo: i c<rh gpZ [kk] ku vly l fct ; ka dh elx us jkl k fud dhVuk' k ka dh elx  
 dks c<k fn; k gA cel e Qy vly l fct ; ka dk mRi knu djrs le; d" kds } jk M M V H  
 ch pl ij elukhV/QW ¼ fct ; ka ij i frC/kr ½ rFk , fYMu l ex vucl i frC/kr jkl k fud  
 dhVuk k dka dk fcdh ule cnydj fo' ksk : i l s bLreky fd; k t k jgk gA t ks rRdky vly dN  
 yEcs le; ckn viuk vlj fn[ kus yxrs gA {s= ds 20 l s 25 i fr' kd fdl ku Ql ya ds  
 ' lq vkrh nly ea gYdh nokv ka dk fNMeLo ugha djds vf/ kd fo" kys dhVuk' k dka t s fl fVd  
 i k fM ¼ l b i j e f k u ] v Q k e f k u r F k Q u o s j v ½ d k b L r e k y d j r s g A b u d s m f p r m i ; k  
 dh t kudjh ds vHko ea ; s vf/ k ksk [kk] ū d kyk ea igpdj fo" kys k i Hko fn[ krs gA v/ ; ; u  
 {s= ea dhVka l s Ql ya dks cpus ds fy, d" kd , . M d Y Q W dk iz k djrs g\$ ft l l s buds  
 bLreky ds nly ku vly ckn ea Ropk rFk vk[ ka ea t yu l sydj vka ds fuf" dz gkus rd dh  
 i j s k f u ; k l k e u s v b Z g A ; s dhVuk' kd viuk vlj yEcs le; rd N M r s g A r F k i k u h e a c g d j  
 Hh u" V ughagkr s g A {s= ea fi Nys i l o o" k z e a dhVuk' kd t g j l s e R q d s e k y s e f g y k v a d h  
 vi k i q " k a e a v f / k d i k , x , g S D ; k i d Q l y a e a dhVuk' k d k f N M e L o v f / k d r j i q " k a  
 } j k f d ; k t k r k g A o" k z 2005 l s 2008 ds v k d M a i j u t j M y s r k l Y Q W l s g k u s o k y h e k r a  
 e a v y o j f t y k j k t ; e a n w j s L F k u i j g A f t l n x h e a r u l o o v l Q y r k v a d s d k j . k l Y Q W  
 ¼ Y ; w f u ; e Q W Q k M ½ u l e d t g j [ k u s o k y a d k v a d M k y x k r k j c < r k t k j g k g A l Y Q W  
 ' k j h j d s f o f H k u v a k a d s i H k o r d j r h g \$ f o ' k s k r l s l s a n ; d h e k a i s ' k k a d e t k j g k u s l s  
 i f i a { l e r k d e g l s t k r h g \$ f t l l s 0 f d r e k r d s e g e a p y k t k r k g A f n y d s v y l o k ; g  
 x q z , o a y b j d k s H h i H k o r d j r k g A H k e l j { k k , o a i k k l j { k k d s i f r d " k d k e a  
 t k x : d r k d k v H k o i k k x ; k g \$ D ; k i d d f " k { s = e a f ' k { k r o x Z d h d e h , d x H k j l e L ; k  
 g A f t l l s d f " k d h m l u r f o f / k k x f e . k a r d v k l k u h l s u g h i g p i k j g h g A j l k u l a d s  
 v f / k d m i ; k s i j v k / k j r [ k r h N M e j v f / k d f v d k A ] f d Q k r h i ; k z j . k v u q l y v l s d f " k  
 d h m l u r f o f / k k v i u k d j o r z k u i f j n " ; e a d h r y k l d r s g A



1. i ; k j . k f e = t s o d [ k r h v i u k u k (Adopting of eco-friendly bio-farming).
2. i ; k j . k v u q l y f v d k Å x s & j k l k f u d [ k r h v i u k u k (Adopting of eco-friendly sustainable non-chemical farming).
3. d h v u k h v n k u l a d h x q l o u k l q u f p r d j u k (To ascertain the quality of insecticides).
4. , d h d r i k s k d r b o i z a k (Integrated nutrient management).
5. , d h d r u k k t h o i z a k (Integrated pest management).
6. t s o d d f k g r q i a h d j . k o i z a k h d j . k i f d z k d k l j y h d r f d ; k t k a (Registration for bio-farming and simplification of certified processes).

### References

1. Bami, H.L. (1992): "Pesticides in Human Poisoning in India. In: Pesticides Development and Safety (ed.) Razada, R. and T.S.S Dikshit" ITRC, Lucknow pp. 60-61.
2. Balwinder Singh and R.S. Dhaliwal (1993): "Pesticide contamination of fatty foods in Developing Countries" Commonwealth Publishers, New Delhi.
3. Bhanti, M., Shukla, G. and Taneja, A. (2004): "Contamination levels of organochlorine pesticides and farmers' knowledge, perception, practices in rural India – A case study" Bull Environ Contam.
4. Chandrasekaran, S. (1997): "Studies on the workers inhalation exposure in pesticide retail outlets. Ph.D. thesis" Tamil Nadu Agricultural University, Coimbatore.
5. Down to Earth, (2003): "Center for Science and Environment" New Delhi 11(18):27-34.
6. FSSAI, (2012) : "Manual for Analysis of Pesticide Residue in Foods" Food Safety and Standards Authority of India, New Delhi.
7. Gupta, A. (2006): Pesticide Residues in food commodities: Advances in Analysis, Evaluation and management, with particular Reference to India.
8. Kalra, R.L. (1989): "Pesticide residue in food in India. An overview. In: Pesticide residue in food" Consumer Education and Research Centre, Ahmedabad.
9. Sharma, K. K. (2013): "Pesticide Residues Analysis Manual (Second Edition)" Network Coordinator, All India Network Project on Pesticide Residues, IARI, Krishi Anusandhan Bhawan-I, Pusa, New Delhi.
10. Murlidharan (2000): "Organochlorine residues in the Waters of Keoladeo National Park." Bull. Environ. Contam. Toxicol. 65: 35-41.
11. Rajendran, Dr. S. (2003): "Environment and Health Aspects of Pesticides Use In Indian Agriculture" Proceedings of the Third International Conference on Environment and Health, Chennai, India.
12. Sharif Zia, M. Jamil, M. and Rahman A. (2009): "Pesticide residue in the food chain and human body inside Pakistan," Journal of Chemical Society, Pakistan.
13. The Hindustan times (2005): "Survey of Pesticides" New Delhi Aug.31, 2005.